



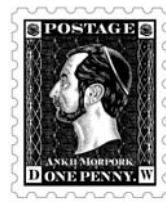
THE STANLEY HOWLER STAMP GUIDE

& really very interesting fact sheet

THE STORY OF
STAMPS FROM THE
HOME OF STAMPS



The Ankh-Morpork Post Office



WITH ENORMOUS THANKS TO **TERRY PRATCHETT**, WHO HASN'T SEEMED TO MIND A BIT.

THE STORY OF THE STAMPS

As with everything we produce, in the beginning was the word, and these Postage Stamps are no different.

You've only to read "Going Postal" to realize the degree of collaboration. As Terry was writing the book, so I was suggesting ideas and producing drawings. Some of the images were suggested by Terry and others resulted from deep and meaningful consultations over a pint or two.

We consulted print historians, philatelists, stamp dealers and museums to get the design and production right.

From my rough sketches and layouts Colin Edwards; who knows the print game inside out, and is a bit of a lad with a Mac, knew a man who could wield a mean quill called Alan Batley.

They could do all the things I couldn't and between us we created the stamps you see today,

It was thanks to the rather splendid Bath Postal Museum I found the last ever, lineal perforator. It dates from Victorian times, and with our help they have got it working again.

That's the good part; the bad part is that this machine like so many of its era does not work on electricity, in fact its leg power, just like a treadle sewing machine. Not only that, the single sheets of stamps have to be fed in by hand, and lined up by eye, not just once of course, but for every line of perforation at each side of the stamp.

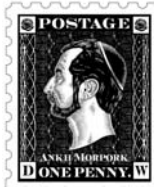
The majority of the stamps have been produced in the traditional manner, on old fashioned gummed paper, by a very old and respected company who normally print stamps for entire countries rather than a small outfit in Somerset.

— THE STAMPS SO FAR —



The Half penny Post Office Red

Pimpernel Orange on a white face.
Patrician in profile opposite denomination.
Central design of the Original Post Office before restoration.
Some subject to in line perforations (coarse) cut.



The Penny Patrician

Mostly Black, showing the head of Lord Vetinari in profile. Has a fine burelage to the background.
Some subject to in line perforations (coarse) cut.



The Eminence Cris

there is a subtle difference



The Ankh Two Penny Purple

Ripe plum Purple overall.
Central motive of Ankh-Morpork Coat of Arms.
Significant numeral bottom centre.
Some subject to in line perforations (coarse) cut.



The Five Penny Morporkia Blue

Dual Blue tints over a white ground with central numeral at top.
Under which is Morporkia girdled, fork in the assent.
Some subject to in line perforations (coarse) cut.



The Ten Penny Morporkia Green

Brassica tints over a white ground with central numeral at top.
Under which is Morporkia girdled, fork in the assent.
Some subject to in line perforations (coarse) cut.



The 50p Cabbage Green

A special Brassica Edition, showing the verdant glory of the Sto Plains.
Patrician opposite a cabbage rampant.

Hidden Gems

As with all forms of collecting, there has to be something left to chance, and something to find. The stamps that are hand perforated are by their very nature rare. It's a long-winded process, and the chances of cocking up a sheet of stamps are great.

A few stamps of all denominations have been put through this process,

But the \$1 Tower of Art, and the \$5 Blue Triangle, are exclusively hand perforated.

It is within these very short run stamps that you will get the little 'sports' that make collecting such ... fun

Not only, but also...

THE STANLEY HOWLER RATHER EXCITING STAMP JOURNAL

Will be on sale, quarterly. A subscription will cost £7.50 per year. There will be pages of Stamp Fun, information on new stamps, exclusive articles, a swap shop, problem page, and other such delights. Also every issue will contain one or more new stamps. To subscribe contact: The Post Mistress, Ankh-Morpork Consulate, 41 The High Street, Wincanton, Somerset. BA9 9JU

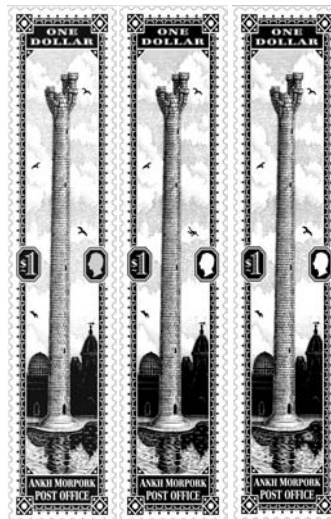
— THE STANLEY HOWLER STAMP ALBUM —

A soft cover album lavishly illustrated with all current and prospective stamps for 2004 & 2005.

This is bound to provide hours of harmless fun & entertainment, especially when inclement weather drives one indoors from the cricket or hockey pitch. Stamp collecting is a capital and healthy way for a young person to be kept away from any bad influence of billiard hall, common ale house, or with falling in with a 'bad lot'.

There is nothing finer than getting out the stamp album and collating those little gems of art that are our postage stamp heritage, and in doing so, painlessly learn about the rich History and fascinating Geography of our world.

There will of course be new stamps introduced throughout the year to coincide with the publication of new books, as well as those that will appear in the journal. A dedicated web site for Discworld Stamps can be found on: www.discworldstamps.com



The \$5 Brass Bridge Blue Triangle

Triangular in shape with an Empire Blue base tint giving way to Octarine hints.
Central design of the famous Brass Bridge over the river Ankh on which can be seen a wizard, watchman, and Assassin. There is also a small boy but he does not count.

The \$5 is very, very, rare (500 in all ... ever)
All are subject to in line perforations (coarse) cut.

The \$1 Tower of Art Green

Depicting the Unseen University Tower of Art amid its scholastic environment.
A most unusual stamp with reports of transfiguration within the engraving.
All are subject to in line perforations (coarse) cut.

THINGS YOU MIGHT LIKE TO KNOW

Some stamps of all denominations will be cancelled with the Ankh-Morpork Post office stamp, and some (even rarer) with the Sto Helit Post mark.

THE FIRST SERIES OF DISCWORLD STAMPS ARE:

- The Half penny Post Office Red
- The Penny Patrician
- The Ankh Two Penny Purple
- The Five Penny Morporkia Blue
- The Ten Penny Morporkia Green
- The 50 Pence Cabbage Green
- The \$1 Tower of Art Green
- The \$5 Brass Bridge Blue Triangle

The 50p Cabbage Green has been produced as an exclusive for Waterstones.

You might get one of those on their exclusive first day cover for 'GOING POSTAL'

Hand Perforated Stamps. (Bath Postal Museum Specials)
These stamps have been printed in much smaller quantities and perforated on the Victorian Press.
Whatever their denomination they will be very much rarer.

The Penny Patrician Black. (Eminence Gris)
Some, a very few, have a streaks of grey hair.

\$1 Tower of Art. (hand perforated only)

A few have a little story played out over three stamps. The most common stamp has just the tower; less common have a man falling from the tower or landing in the water below with a splash.

These are the Tower of Art 'sports'. You will never be able to buy one from us as just a stamp.

They will only ever be found in our little brown stamp envelopes. Roughly it will be one, in a bag, now and then.

The \$5 Blue. (hand perforated only)

This is intentionally very, very, rare. Only 500 have been printed. Being the shape they are that's just as well when it comes to risking your fingers under the perforator.

You will never be able to buy one from us as just a stamp.

As with the Tower of Art 'sports' they will only ever be found in our

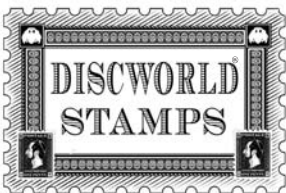
LITTLE BROWN STAMP ENVELOPES,

and as outworkers pack them. We do not know which bags might contain one; it's down to luck, good fortune, or mystic ability and perhaps a bit of fortune telling.

Roughly it will be one, in a bag, very, very, very, and now and then.

If you are fortunate enough to get one of these.

Then please contact us at the address below. We will then register this stamp, which safeguards your possession, and tells us where it landed up.



THE CUNNING ARTIFICER
41 The High Street
WINCANTON
Somerset. BA9 9JU
44 (0) 1 963 824 686



www.discworldstamps.com

COMING SOON

The Stanley (ask me about stamps) Howler
STAMP BOOK
& Interesting fact sheet

The story of stamps from the home of stamps



The Ankh-Morpork Post Office

Terry, bless him, has written the history of some stamps for our STANLEY HOWLER STAMP ALBUM, which is now being produced, and is as a result probably the funniest Stamp Album ever, and another bit of 'real' DISCWORLD.

The Little



BROWN ENVELOPE
Assorted
DISCWORLD®
POSTAGE STAMPS



The stamps contained in our **LITTLE BROWN ENVELOPE**

are a random mixture of the types available.

You may find that some have very rough perforations; it means that these stamps have been perforated on a Victorian Stamp perforator which is owned by the Bath Postal Museum, it is over 170 years old.

This machine was restored with the help of Terry Pratchett and The Cunning Artificer.

In fact Terry might well have helped in perforating some of the stamps contained in any of our

LITTLE BROWN ENVELOPES.

There is at least one of each stamp, and the pack will include some of the rare hand perforated stamps and could include some rare issues of the Tower of Art, The 'Eminence Gris', or even a very, very rare \$5 triangle.

If you are lucky enough to find a \$5 Blue, then we would ask you to register this fact with us as there will only ever be 500 worldwide.

To facilitate easy and low cost trading Swap Shop will feature on our dedicated web site, www.discworldstamps.com as well as one in our quarterly **Journal** which will be printed on 'real' paper.

DISCWORLD STAMPS have been produced to the highest standard from original artwork and will feature in the landscape of DISCWORLD for years to come.



A certain 'Gentleman of Letters' supervising the perforations of the first stamps

INDIVIDUAL DISCWORLD STAMPS CAN BE PURCHASED FOR THE FOLLOWING PRICES

The Half penny Post Office Red	20p
The Penny Patrician	25p
The Ankh Two Penny Purple	35p
The Five Penny Morporkia Blue	60p
The Ten Penny Morporkia Green	60p
The \$1 Tower of Art Green	£1.00
(Hand Perforated Only)	

The Little



BROWN ENVELOPE
Assorted
DISCWORLD®
POSTAGE STAMPS

Only
£4.99